

First Circular

We are pleased to announce the International Conference on Fisheries Engineering 2019: Realizing a Healthy Ecosystem and Sustainable Use of the Seas and Oceans, which will be held in

Nagasaki (Japan), 21-24 September 2019

Research in Fisheries Engineering includes fisheries and environments associated with artificial reefs and seaweeds, construction of fishing ports, fishing boat and fishing gear engineering, resource survey technologies and information technologies relating to fisheries, which contribute to mitigating global scale issues such as climate change, food security and safety, and energy supply.

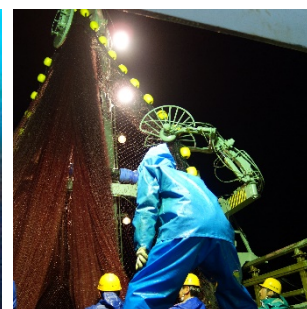
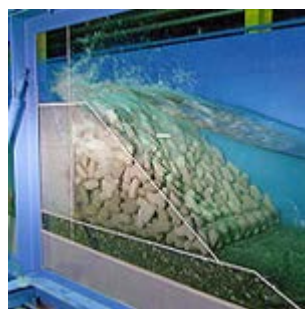
The Japanese Society of Fisheries Engineering will hold the international conference to review today's Fisheries Engineering research and discuss the future direction of research. The international conference is also aimed at encouraging the future generations of young men and women in the field.

The sea off Nagasaki was designated as a Marine Renewable Energy demonstration field site by the Headquarters for Ocean Policy, Cabinet Secretariat in 2014. Research and development of related technologies are progressing through collaborations with industries, administrative agencies, and academia. Under these circumstances, this international conference has set the theme "Marine Renewable Energy and Fisheries Engineering" and will hold a one-day symposium on this topic. Leading scientists on the theme will present achievements of their investigations.

We thank you for your attention and hope to welcome many of you in Nagasaki in September 2019.

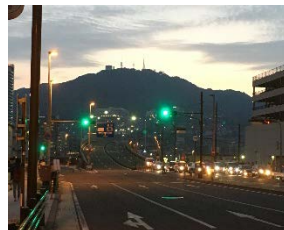
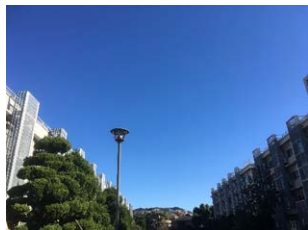
The Chair of the Organizing Committee

Shinya Otake



VENUE

The ICFE 2019 will be held in the Bunkyo Sky-Hall of Nagasaki University. It is in the heart of Nagasaki City, where all your needs are just around the corner. Nagasaki is also well known for its unique history and culture, being the first port in Japan opened for foreign trading, considered as the birthplace of Catholicism in Japan, and a symbol of peace for the world.



ORGANIZATION

The organizational framework for the conference is as follows:

Organizing committee

Chair: Shinya Otake, *Fukui Prefectural University (Japan)*

Nobuo Kimura, *Hokkaido University (Japan)*, Tadashi Tokai and Hisaharu Sakai, *Tokyo University of Marine Science and Technology (Japan)*, Akira Watanuki, *Alpha Hydraulic Engineering Consultants Co. Ltd.(Japan)*, Munechika Ishizaki, *Kagoshima University (Japan)*, Ryutaro Yamamoto, *Fisheries Agency (Japan)*, Junya Higano, Yoshimi Takao and Hisami Kuwahara, *Japan Fisheries Research and Education Agency (Japan)*, Stephen Bortone, *Osprey Aquatic Sciences (USA)*, Yoshiki Matsushita, *Nagasaki University (Japan)*

Steering committee

Yoshiki Matsushita, Ken-ichi Shimizu, Miyuki Hirose, Ryo Kawabe, Gregory N. Nishihara and Mitsuharu Yagi, *Nagasaki University (Japan)*, Shinya Otake, *Fukui Prefectural University (Japan)*, Noboru Tazoe and Kengo Hashimoto, *Fisheires Infrastructure Development Center (Japan)*, Takashi Nakamura, *Nagasaki Prefecture government (Japan)*, Antonello Sala, *National Research Center, Institute of Marine Biological Resources and Biotechnologies (Italy)*, Nobuo Takagi, *Nagasaki Prefectural Institute of Fisheries (Japan)*, Hiroya Tsuda, *Nagasaki Sea-para Net (Japan)*

Scientific committee

Stephen Bortone, *Osprey Aquatic Sciences (USA)*, Gianna Fabi, *Institute of Marine Science (Italy)*, Jarina Mohd Jani, *Universiti Malaysia Terengganu (Malaysia)*, Moonock Lee and Doojing Hwang, *Chonnam National University (Korea)*, Jun Lin, *Shanghai Ocean University (China)*, Michael Pol, *Massachusetts Division of Marine Fisheries (USA)*, Antonello Sala, *National Research Center, Institute of Marine Biological Resources and Biotechnologies (Italy)*, Shigenobu Takeda, *Nagasaki University (Japan)*, Benjamin Williamson, *University of the Highlands and Islands (UK)*, Hsin-Ming Yeh, *Fisheries Research Institute (Taiwan)*, Ilana Rosental Zalmon, *Universidade Estadual do Norte Fluminense Darcy Ribeiro (Brazil)*

SCIENTIFIC PROGRAM

The scientific program is intended to address research conducted in all disciplines, methodologies and applications. In order to achieve this scope, the following themes have been identified;

T1: Fisheries and environments associated with artificial reefs and seaweeds

T2: Construction of fishing ports,

T3: Fishing boats and fishing gear engineering

T4: Fisheries resource survey and information technologies

T5: Open themes

CALL FOR PAPERS

We invite our colleagues to present studies addressing any of the above or the symposium themes. Submission method, its deadline and other important information will be announced at the conference website, which will be open on 1 January 2019 (<http://www.jsfe.gr.jp/icfe2019/>).

LANGUAGE

English will be the official language of the meeting and field trips.

REGISTRATION FEES

The registration fee covers access to all sessions and a symposium, conference materials, and the conference dinner. We will consider the full rate for early birds at around 300 US\$ and around 150 US\$ for students, the official rate will be announced after 1 January 2019.

FIELD TRIPS

Field trips will be held on the final day of the conference (24 September 2019).

A complete list with detailed information on the field trips will be provided after 1 January 2019.

CONTACT US

Conference website: <http://www.jsfe.gr.jp/icfe2019/>

Conference e-mail: icfe2019@gmail.com

Postal address:

ICFE2019

c/o Yoshiki Matsushita

Graduate School of Fisheries and Environmental Sciences, Nagasaki University

1-14 Bunkyo-machi, Nagasaki, 852-8521 Japan

We accept the submission of meeting and workshop proposals on specific topics. Submit your proposals no later than 28 Feb. 2019 to the above email address.